

# PREMIUM SILK *FLOWERS*



# Audrey

A timeless, classic silk wedding flower collection featuring **all-white florals** including various **roses, camellia, hydrangeas, and lily of the valley**. With a monochromatic color scheme, these wedding flowers will never go out of style and are perfect for weddings in any season.





**Bridal Bouquet**  
*(Hand-tied)*



**Bridal Bouquet**  
*(Round)*



**Bridal Bouquet**  
*(Classic)*



**Bridesmaid Bouquet**



**Posy Bouquet**



**Vaseless  
Centerpiece**



**Large Centerpiece**



**Grand Centerpiece**



**Floral Meadow**



**Floral Garland**



**Floral Swag**



**Floral Runner**

**Collection also includes:** Aisle Marker, Boutonnieres, Hair Accessories, Dog Collar, Cake Flowers, and a Pomander Ball.

# Cameron

The Cameron collection offers subtle but vibrant colors and textures using mauve and natural green succulents, salmon and apricot-colored Diana roses, airy white peonies, soft green tropical hellebores, and a hint of pale peach ranunculus and beautiful forest fern.





**Bridal Bouquet**  
*(Hand-tied)*



**Bridal Bouquet**  
*(Garden-cut)*



**Bridesmaid Bouquet**



**Posy Bouquet**



**Aisle Marker**



**Centerpiece**



**Large Centerpiece**



**Grand Centerpiece**  
*\*Stand rented separately*



**Floral Garland**

**Collection also includes:** Boutonnieres, Hair Accessories, Dog Collar, Cake Flowers, and a Pomander Ball.

# Charlotte

Charlotte is composed of luxurious **Dutchess roses**, **lush peonies**, **dahlia sprays**, **anemones**, **tulips**, and **cascading ivy sprays**. Designed with versatility in mind, this collection effortlessly complements everything from traditional black-tie weddings to intimate garden ceremonies — delivering an enchanting floral statement that is both chic and unforgettable.





Bridal Bouquet  
*(Hand-tied)*



Bridal Bouquet  
*(Round)*



Bridesmaid Bouquet



Posy Bouquet



Boutonniere



Aisle Marker



Vaseless  
Centerpiece



Large Centerpiece



Grand Centerpiece



Floral Garland



Floral Meadow



Floral Runner

**Collection also includes:** Hair Accessories, Dog Collar, Cake Flowers, and a Pomander Ball.

# Eloise

Featuring the perfect mix of wild and manicured florals including an abundance of **wild wisteria**, a **variety of garden roses**, **zinnias**, and **ranunculus**. The collection captures a soft pastel color palette with shades of light peach, linen cream, and two-toned blush petals. The Eloise is a natural beauty embodying the essence of the English countryside.





Bridal Bouquet



Bridal Bouquet  
*(Blanc)*



Bridesmaid Bouquet



Posy Bouquet



Vaseless  
Centerpiece



Centerpiece



Large Centerpiece



Grand Centerpiece  
*\*Stand rented separately*



Floral Meadow



Floral Garland



Floral Swag



White Wisteria  
Garland

**Collection also includes:** Aisle Marker, Boutonnieres, Hair Accessories, Dog Collar, Cake Flowers, and a Pomander Ball.

# Gemma

The Gemma Collection is a bold and striking celebration of all things pink! This vibrant, monochromatic collection showcases a captivating blend of **bright bougainvillea, various shades of pink roses, camellias, lush ranunculus, and dreamy peonies** in a harmonious spectrum of pinks and fuchsias.





Bridal Bouquet  
(Hand-tied)



Bridal Bouquet  
(Round)



Bridal Bouquet  
(Bougainvillea)



Bridesmaid Bouquet



Posy Bouquet



Boutonniere



Aisle Marker



Centerpiece



Large Centerpiece



Grand Centerpiece



Floral Meadow



Floral Garland

**Collection also includes:** Hair Accessories, Dog Collar, Cake Flowers, and a Pomander Ball.

# Jane

The Jane Collection is made up of lots of interesting greenery, with a variety of shapes and textures, including **eucalyptus leaves, thistle, and Queen Anne's lace**. The flowers are all white in color and feature roses and peonies. The design and style of this collection is really modern and natural, while the color palette keeps it timeless and classic.





**Bridal Bouquet**  
*(Hand-tied)*



**Bridal Bouquet**  
*(Round)*



**Bridesmaid Bouquet**



**Posy Bouquet**



**Vaseless  
Centerpiece**



**Centerpiece**



**Large Centerpiece**



**Grand Centerpiece**  
*\*Stand rented separately*



**Floral Meadow**



**Floral Garland**



**Floral Swag**



**Floral Runner**

**Collection also includes:** Aisle Marker, Boutonnieres, Hair Accessories, Dog Collar, Cake Flowers, and a Pomander Ball.

# Kate

The perfect balance between modern simplicity and traditional romance. Composed of **light, pastel-colored flowers, with a focus on soft pink roses, peach accents, and various shades of blue flowers**, the arrangements offer a perfect muted color palette.





Bridal Bouquet  
*(Hand-tied)*



Bridal Bouquet  
*(Garden-cut)*



Bridesmaid Bouquet



Posy Bouquet



Aisle Marker



Vaseless  
Centerpiece



Large Centerpiece



Grand Centerpiece



Floral Meadow



Floral Garland



Floral Swag



Floral Runner

**Collection also includes:** Boutonnieres, Hair Accessories, Dog Collars, Cake Flowers, and a Pomander Ball.

# *Kimpton*

A romantic red and pink color palette, perfect for winter months. This floral collection is made of lush burgundy hydrangea, red, pink, and two-toned spray roses. Complemented with magnolia leaves and an abundance of seeded eucalyptus, giving it a natural look.





**Bridal Bouquet**  
*(Cascading)*



**Bridal Bouquet**  
*(Round)*



**Bridesmaid Bouquet**



**Posy Bouquet**



**Boutonniere**  
*(Red Rose)*



**Boutonniere**



**Vaseless Centerpiece**



**Large Centerpiece**



**Grand Centerpiece**  
*\*Stand rented separately*



**Floral Meadow**



**Floral Garland**



**Floral Garland**  
*(Magnolia)*

**Collection also includes:** Hair Accessories, Dog Collar, Cake Flowers, and a Pomander Ball.

# *Kinsley*

This bright, bold collection has the perfect mix of whimsy and romance. The wildflower, hand tied look is made up of beautiful **fuchsia peonies**, **yellow poppies**, **Queen Anne's lace**, **white cosmos**, **orange marigolds**, and **nandina greenery**.





Bridal Bouquet



Bridesmaid Bouquet



Posy Bouquet



Boutonniere



Vaseless  
Centerpiece



Centerpiece



Large Centerpiece



Grand Centerpiece  
*\*Stand rented separately*



Floral Swag



Floral Meadow



Floral Garland



Floral Garland  
(Wisteria)

**Collection also includes:** Aisle Marker, Hair Accessories, Dog Collar, Cake Flowers, and a Pomander Ball.

# Millie

Featuring a mix of garden florals accented with light greenery. The collection includes shades of light blue, periwinkle blue, and creamy whites. **Butterfly hydrangeas, lilac, English roses, and delphinium** are used to create this collection of English garden-inspired florals. A timeless and romantic collection, perfect for a backyard wedding or a ballroom affair.





Bridal Bouquet  
*(Hand-tied)*



Bridal Bouquet  
*(Garden-cut)*



Bridesmaid Bouquet



Posy Bouquet



Vaseless Centerpiece



Centerpiece



Large Centerpiece



Grand Centerpiece  
*\*Stand rented separately*



Floral Swag



Floral Meadow



Floral Garland



Floral Garland  
*(Wisteria)*

**Collection also includes:** Aisle Marker, Hair Accessories, Dog Collar, Cake Flowers, and a Pomander Ball.

# Marlowe

Featuring a variety of **wildflower anemones, scabiosa, sweet pea, lilac, cherry blossoms, and delicate ranunculus, in shades of deep plum, lavender, and merlot.** The collection's dramatic transition from light to dark stems through the arrangements provide a sophisticated ombre design, perfect for any season.





Bridal Bouquet



Bridal Bouquet  
(Blanc)



Bridesmaid Bouquet



Posy Bouquet



Boutonniere



Boutonniere  
(Blanc)



Centerpiece



Large Centerpiece



Grand Centerpiece  
*\*Stand rented separately*



Floral Swag



Floral Meadow



Floral Garland

**Collection also includes:** Aisle Marker, Hair Accessories, Dog Collar, Cake Flowers, and a Pomander Ball.

# Nina

The Nina Collection captures the romance of a western sunset with its warm, dreamy color palette. A stunning blend of terracotta and soft pink open roses, dusty lavender, rust-colored ranunculus, and deep plum apple blossom sprays come together in perfect harmony.





**Bridal Bouquet**  
*(Hand-tied)*



**Bridal Bouquet**  
*(Garden-cut)*



**Bridesmaid Bouquet**



**Posy Bouquet**



**Aisle Marker**



**Vaseless  
Centerpiece**



**Centerpiece**



**Large Centerpiece**



**Grand Centerpiece**  
*\*Stand rented separately*



**Floral Swag**



**Floral Meadow**



**Floral Garland**

**Collection also includes:** Hair Accessories, Dog Collar, Cake Flowers, and a Pomander Ball.

# Olivia

The Olivia Collection is our gorgeous, italia inspired look. This rustic, hand tied design is made of **ivory roses, mini ranunculus, rosemary olive bushes**. A sophisticated palette for weddings in the passing months of summer to fall.





Bridal Bouquet  
*(Hand-tied)*



Bridal Bouquet  
*(Garden-cut)*



Bridesmaid Bouquet



Posy Bouquet



Boutonniere



Aisle Marker



Centerpiece



Large Centerpiece



Grand Centerpiece  
*\*Stand rented separately*



Floral Garland

**Collection also includes:** Hair Accessories, Dog Collar, Cake Flowers, and a Pomander Ball.

# Shelbie

The collection features beautiful **open and closed magnolias, paired perfectly with white camellias and gardenias.** Lush magnolia leaves with emerald and golden hues mixed with deep evergreen camellia leaves create the perfect greenery backdrop for this sophisticated white and green floral look.





Bridal Bouquet  
*(Hand-tied)*



Bridal Bouquet  
*(Garden-cut)*



Bridesmaid Bouquet



Posy Bouquet



Aisle Marker



Vaseless  
Centerpiece



Centerpiece



Large Centerpiece



Grand Centerpiece



Floral Swag



Floral Meadow



Floral Garland

**Collection also includes:** Hair Accessories, Dog Collar, Cake Flowers, and a Pomander Ball.

# Stella

Featuring velvety red roses, dramatic burgundy calla lilies, layered peonies, and soft accents of waxflower, hellebores, and Queen Anne's lace. Each arrangement in this collection is thoughtfully designed to evoke passion and elegance.





Bridal Bouquet



Bridal Bouquet  
*(Rouge)*



Bridesmaid Bouquet



Posy Bouquet



Aisle Marker



Vaseless  
Centerpiece



Lg. Vaseless  
Centerpiece



Floral Meadow



Floral Garland

**Collection also includes:** Hair Accessories, Dog Collar, Cake Flowers, and a Pomander Ball.

# Taylor

The Taylor Collection is made up of gorgeous **antique beige peonies**, **lavender scabiosa**, and a **variety of ivory colored roses**. You'll find hints of lavender among the lush **silver dollar eucalyptus** and **lambs ear greenery**. This airy, romantic collection is perfect for the modern bride looking for on-trend, yet timeless wedding flowers.





Bridal Bouquet  
(Round)



Bridal Bouquet  
(Hand-tied)



Bridesmaid Bouquet



Posy Bouquet



Vases  
Centerpiece



Centerpiece



Large Centerpiece



Grand Centerpiece  
*\*Stand rented separately*



Floral Swag



Floral Meadow



Floral Runner

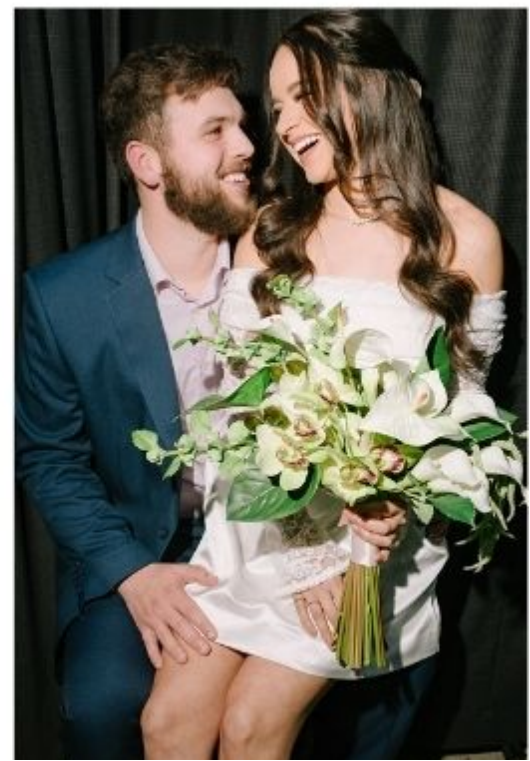


Floral Garland

**Collection also includes:** Aisle Marker, Hair Accessories, Dog Collar, Cake Flowers, and a Pomander Ball.

# Zayah

Sleek, structured, and effortlessly chic—the Zayah Collection redefines modern elegance with an architectural edge. Featuring **striking white calla lilies, anthurium, bells of Ireland, cymbidium orchid sprays, and cascading amaranthus**, Zayah is a vision of understated sophistication.





Bridal Bouquet  
*(Hand-tied)*



Bridal Bouquet  
*(Blanc)*



Bridesmaid Bouquet



Posy Bouquet



Boutonniere



Vaseless  
Centerpiece



Centerpiece



Floral Swag



Floral Meadow



